

INTRODUCING THE
CAPTIS
— COLLECTION —



ENGINEERED WITH ELEGANCE

FAUCETS | SANITARYWARE | SHOWERS

CIN NO: L25200GJ1996PLC029134

Registered & Corporate Oce: 207/1, 'Astral House',
B/h Rajpath Club, o S . G. Highway, Ahmedabad - 380059 Gujarat, India.
Ph: +91 79 6621 2000 | Website: www.astralbathware.com
Email: customercare@astralbathware.com

Astral Bathware Toll Free ☎ +91 85117 81111

FAUCETS | SANITARYWARE | SHOWERS

A full-page background image of an astronaut in a white spacesuit floating in the black void of space. The astronaut is positioned on the left side of the frame, with their body angled towards the right. A thin white vertical line runs down the center of the image, passing through the astronaut's torso. The lighting is dramatic, highlighting the contours of the spacesuit and the astronaut's helmet.

ENGINEERED WITH ELEGANCE

We believe that beauty is always beyond being just skin deep. It is beyond aesthetics and beyond just glow and glitter. We believe, true beauty is the perfect blend of form and function, something that gives us a sense of fulfillment, something that enhances design narrative, and something which brings about a good sense far and wide.

Astral Bathware, across its Celestia, Imperia, Premia, and Gloria range, reflects true beauty and has stamps of excellence. Our products are crafted with precision using the highest quality imported material and elements. Every sleek edge, every smooth lever, and every minute component has been designed and engineered with elegance! And anchored to this philosophy, we are confident that this range of Bathware will do everyday magic in your lives!

CAPTIS

— COLLECTION —



A SYMPHONY OF ELEGANCE AND INNOVATION

UNVEIL THE ART OF PERFECTION

Transform your daily routine into a luxurious experience with the new Captis series. Crafted with meticulous attention to detail, Captis faucets are more than just fixtures; they are a testament to exquisite craftsmanship and innovative design.

Every curve of the Captis lever is a graceful gesture, a ballet of form and function that brings sophistication to any space. Its delicate shape flows seamlessly, inviting touch and offering a tactile experience that is both soothing and invigorating.

Captis faucets are engineered with cutting-edge technology to ensure flawless performance every time. The smooth, ergonomic handle offers effortless control, while the high-quality materials guarantee durability and a timeless aesthetic.

UNIQUE FEATURES

GENTLE TOUCH

The high precision cartridges of the faucets, make the operation of the lever super effortless.



WATER SAVING AERATOR

We offer this aerator as it saves a substantial amount of water so you don't have to compromise on the flow of water.



MIRROR FINISH

A specially-coated faucet body that gives a mirror-like finish to enhance the bathing experience.



ELEGANT DESIGNS

These faucets have uniquely appealing designs that are class-apart and have a modern look.



QUALITY ASSURANCE

We maintain a high standard of quality parameters. Thus, our faucets are a perfect blend of exceptional performance and customer satisfaction and rank higher than the industry norms.



QUARTER TURN



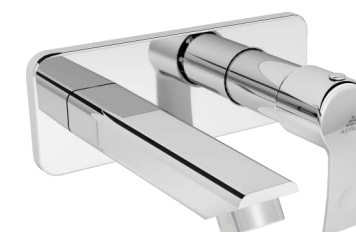
31101
AF140101CHBR
PILLAR
COCK

MRP: 1420



31106
AF140106CHBR
PILLAR COCK
EXTENDED BODY

MRP: 2670



31111
AF140111CHBR
EXPOSED PART OF WALL MOUNTED
BASIN COCK WITH SPOUT AND
OPERATING LEVER

MRP: 2130

AF900911CHBR
SUITABLE CONCEALED BODY

MRP: 1825

BASIN AREA SINGLE LEVER



31201
AF140201CHBR
BASIN MIXER SINGLE
LEVER

MRP: 3395



31206
AF140206CHBR
BASIN MIXER SINGLE
LEVER EXTENDED BODY

MRP: 4580

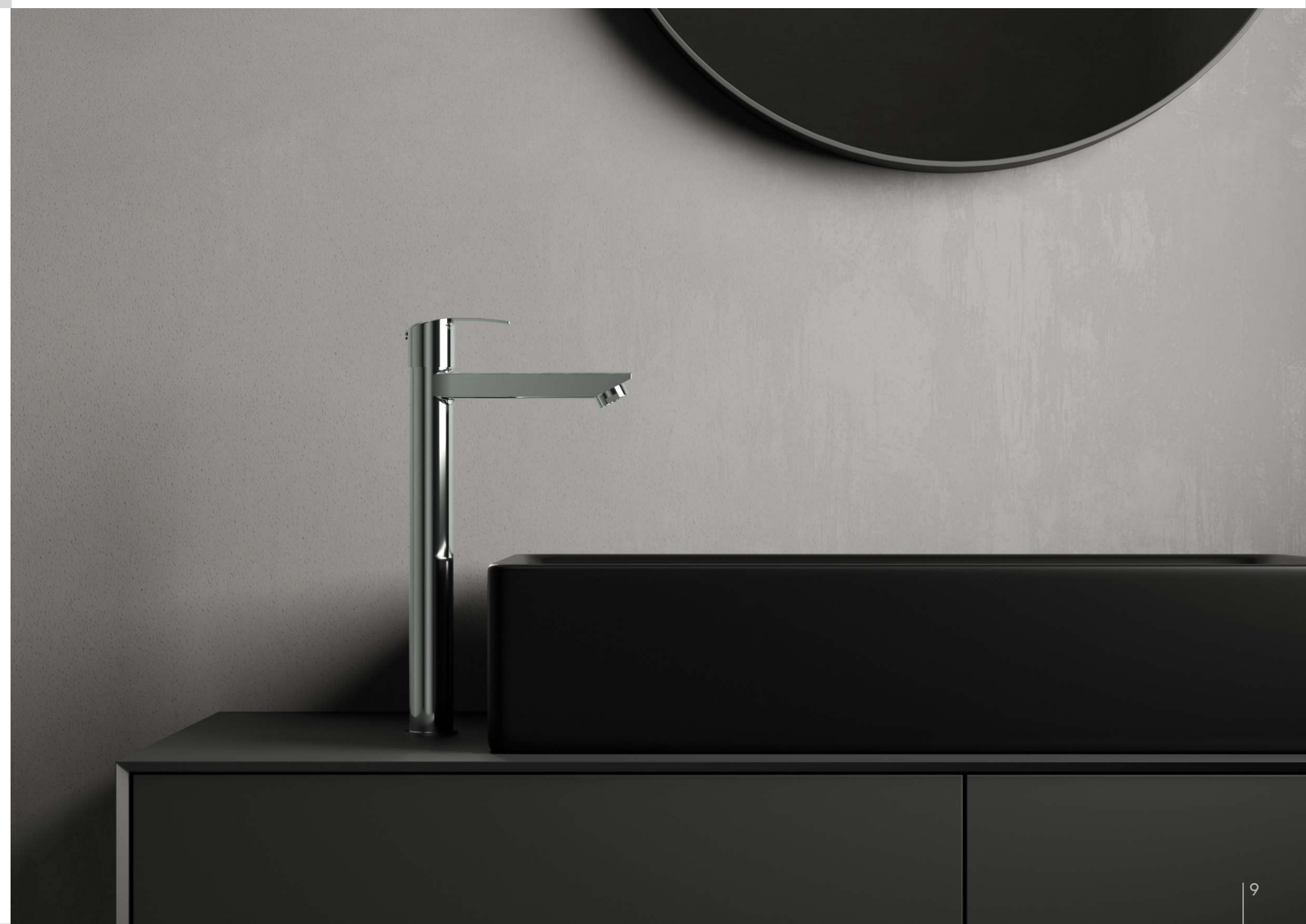


31211
AF141211CHBR
EXPOSED PART OF
WALL MIXER BASIN MIXER

MRP: 2470

AF901011CHBR
SUITABLE CONCEALED BODY

MRP: 3825





SHOWER AREA SINGLE LEVER



31341
AF140341CHBR
EXPOSED PART OF SINGLE
LEVER CONCEALED DIVERTER
(35 MM)

MRP: 1070

AF901006CHBR
SUITABLE CONCEALED
BODY

MRP: 2400



31301
AF140301CHBR
EXPOSED PART OF SINGLE
LEVER CONCEALED
DIVERTER

MRP: 1325

AF901001CHBR
SUITABLE CONCEALED
BODY

MRP: 3655



31321
AF140321CHBR
EXPOSED PART OF SINGLE
LEVER HIGH FLOW
CONCEALED DIVERTER

MRP: 1510

AF901021CHBR
SUITABLE CONCEALED
BODY

MRP: 4455



31311
AF140311CHBR
EXPOSED PART OF SINGLE
LEVER 3 INLET CONCEALED
DIVERTER

MRP: 1510

AF901012CHBR
SUITABLE CONCEALED
BODY

MRP: 4455

QUARTER TURN



31121
AF140121CHBR
BASIN MIXER CENTRAL
HOLE

MRP: 3570



31102
AF140102CHBR
SWAN NECK PILLAR
COCK-LEFT HANDLE

MRP: 1865



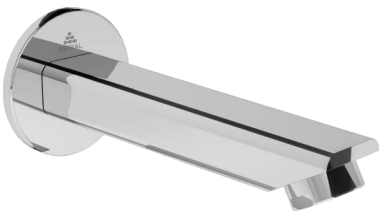
31103
AF140103CHBR
SWAN NECK PILLAR
COCK -RIGHT HANDLE

MRP: 1865





BATH SPOUT



31331
AF140331CHBR
BATH SPOUT

MRP: 1275



31336
AF140336CHBR
BATH SPOUT WITH
TIPTON

MRP: 1825

SHOWER AREA QUARTER TURN



31136
AF140136CHBR
WALL MIXER 3-IN-1 SYSTEM
WITH PROVISION FOR HAND
SHOWER AND OVER HEAD
SHOWER

MRP: 5815



31141
AF140141CHBR
WALL MIXER 2-IN-1
SYSTEM WITH PROVISION
FOR OVER HEAD SHOWER

MRP: 5200



31142
AF140142CHBR
NON TELEPHONIC
WALL MIXER

MRP: 3925

KITCHEN AREA - QUARTER TURN



31186
AF140186CHBR
SINK COCK TABLE
MOUNTED WITH 150 MM
SWINGING SPOUT

MRP: 2090



31176
AF140176CHBR
SINK COCK WALL MOUNTED
WITH 150 MM SWINGING
SPOUT

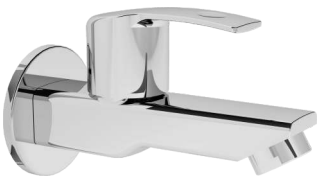
MRP: 1785



31196
AF140196CHBR
SINK MIXER WALL
MOUNTED WITH 150 MM
SWINGING SPOUT

MRP: 3755

ALLIED PRODUCTS



31156
AF140156CHBR
BIB COCK LONG
BODY

MRP: 1285



31158
AF140158CHBR
BIB COCK SHORT
BODY

MRP: 1115



31159
AF140159CHBR
BIB COCK WITH
NOZZLE

MRP: 1275



31161
AF140161CHBR
BIB COCK 2-WAY

MRP: 1880



31166
AF140166CHBR
ANGLE COCK

MRP: 875



31171
AF140171CHBR
ANGLE COCK 2 WAY

MRP: 1725



31550
AF145550CHBR
CONCEALED STOP COCK
(15 MM) WITH EXPOSED
PART

MRP: 1215



31551
AF145551CHBR
CONCEALED STOP COCK
(20 MM) WITH
EXPOSED PART

MRP: 1255



31552
AF135552CHBR
CONCEALED FLUSH COCK
(25 MM) WITH EXPOSED
PART - QUARTER TURN

MRP: 2140

CONCEALED PARTS



50006
AF901006CHBR
CONCEALED BODY OF
SINGLE LEVER DIVERTER -
35 MM CARTRIDGE

MRP: 2400



50001
AF901001CHBR
CONCEALED BODY OF
SINGLE LEVER DIVERTER -
40 MM CARTRIDGE

MRP: 3655



50021
AF901021CHBR
CONCEALED BODY OF HIGH
FLOW DIVERTER - 45 MM
CARTRIDGE

MRP: 4455



50012
AF901012CHBR
CONCEALED BODY OF 3 INLET
DIVERTER

MRP: 4455



50911
AF900911CHBR
CONCEALED BODY OF WALL
MOUNTED BASIN COCK WITH
SPOUT AND OPERATING LEVER

MRP: 1825



50011
AF901011CHBR
CONCEALED BODY OF WALL
MOUNTED SINGLE LEVER BASIN
MIXER - 35 MM CARTRIDGE

MRP: 3825